

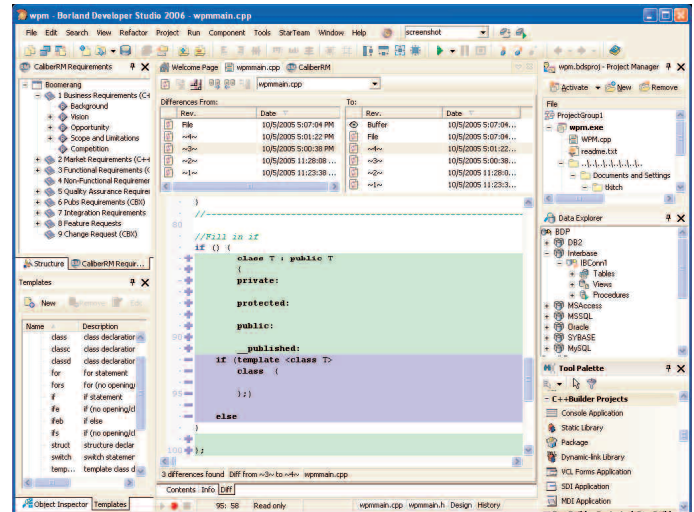
Borland®

Borland® C++Builder® 2006

The Ultimate C++ IDE for Microsoft® Windows® Application Delivery

MAXIMIZE DEVELOPER PRODUCTIVITY AND COLLABORATION

For the professional C++ developer who demands reliable, high-performance applications, this is the IDE you've been waiting for! Borland® C++Builder® 2006 updates and refines the popular C++Builder IDE with the latest RAD and application lifecycle management (ALM) features for mission-critical C and C++ development. Develop robust GUI, database, and web applications in record time with WYSIWYG web application development, powerful new data providers, the latest IDE productivity features, and seamless IDE integration with version control, bug tracking, and team collaboration. Leverage a wide variety of third party components with the latest Visual Component Library (VCL). C++Builder 2006 is part of Borland Developer Studio – Borland's multi-language developer environment for Microsoft® Windows® and .NET applications. It is the only IDE that includes support for C, C++, C# and Delphi (both Windows and .NET) applications within a single environment.



Borland C++Builder 2006 provides developers with the latest technologies to make development easier and faster, including requirements and source code management, History View, Structure pane, Code Templates, Data Explorer, and more.

FEATURES AND BENEFITS

ACCELERATE MISSION-CRITICAL C/C++ DEVELOPMENT WITH THE LATEST IDE AND VCL PRODUCTIVITY FEATURES

A new live templates system guides developers through code structures, allowing users to tab through fields and insert points of structured code templates. Smart block completion anticipates and gracefully adds block closures as you type. A new VCL designer automatically aligns UI components according to customizable guidelines to ensure visual consistency or conformance to corporate standards. Advanced C/C++ refactorings let you rapidly make extensive automated source code changes that work. Take advantage of popular Delphi IDE features like SyncEdit, History Manager, Palette searching, Integrated Quality Central, Gallery Palette, and more.

EVERYTHING YOU NEED, ALL IN ONE IDE

With Delphi, C/C++, and C# languages, and support for the Microsoft® .NET Framework, ASP.NET, VCL.NET, VCL, and Win32® SDKs, you have the right tools for any job. With full support for Win32® and .NET, C++Builder 2006 lets you continue to develop and maintain existing Win32 applications while simplifying the path to the Microsoft .NET Framework and next-generation Windows applications.

TAKE C++ DEVELOPMENT TO THE NEXT LEVEL WITH THE MOST COMPREHENSIVE RAD ENVIRONMENT EVER

Borland® C++Builder® 2006 includes updated support for rapid GUI and database C++ development, and now supports rapid application development (RAD) web application development in C++. Leverage the latest bundled and third party VCL components with the newest version of VCL, shared with Delphi. Simplify application data access with improved database providers and a new database explorer with drag-and-drop support. Take advantage of new IntraWeb support for RAD C++ web page design and web application development. Generate professional reports with the included Nevrona Rave reports for C++.

STREAMLINE THE COMPLETE APPLICATION LIFECYCLE

Take full control of the application development lifecycle process with integrated requirements management, modeling, version control, bug tracking, and team collaboration tools. Simplify management of complex build options with a flexible new build configuration manager.

Borland® C++Builder® 2006

KEY FEATURE HIGHLIGHTS*	d = Delphi (Win32) support D = Delphi (.NET) support	# = C# support C = C/C++ support	ENT	PRO
	VCL			
New Live Designer Guidelines with “smart” snap to drag lines, margins, padding, and text-based alignment	dDC		■	■
New VCL Flow Panel and Grid panel for - HTML style and Table style form layouts with Autopositioning	dDC		■	■
IDE				
New Live Templates System - tab through fields and insert points of any template	dD#C		■	■
New “Smart” Block completion - anticipates and gracefully adds block closures as you type	dD#C		■	■
New editor “Change Bar” - indicates modified lines and saved session modified lines	dD#C		■	■
DATABASE DEVELOPMENT AND ACCESS				
New! Database Explorer with dbExpress and drag-n-drop support	dDC		■	■
Latest dbExpress client/server and multi-tier drivers for Borland® InterBase® 7.5, Oracle® 10g, IBM® DB2® v8.x, Microsoft® SQL Server™ 2000/2005, Informix® v9.x, SQL Anywhere® v9, MySQL® v4.0.24, and Sybase® v12.5	dDC		■	
ORACLE 9i Data types support and Decimal Separator	dDC		■	
Latest dbExpress local data access drivers for Borland InterBase 7.5 and MySQL v4.0.24	dDC		■	■
BDE Support for dBase and Paradox - for both Win32 and .NET	dDC		■	■
dbGO for ADO - for both Windows and .NET (MDAC 2.8)	dDC		■	■
BUILD MANAGEMENT, SOURCE CODE MANAGEMENT, AND TEAM PRODUCTIVITY				
Complete native Borland® StarTeam® and Borland® CaliberRM™ IDE integration	dD#C		■	■
New! Build Configuration Manager organizes multiple build settings for compiler and linker options	dD#C		■	■
DEBUGGING				
New! Expandable evaluator, tooltips, watches, and local variables view	dD#C		■	■
Enhanced! Remote debugging	dD#C		■	■
New! Selective symbol table loading	dD#C		■	■
Enhanced! CodeGuard C++ debugger support	C		■	■
Enhanced! Thread view, Watch view, CPU view, FPU view, and Modules view	dD#C		■	■
INTRAWEB V8.0				
WYSIWYG RAD Web page development	dDC		■	■
WYSIWYG RAD Web application development	dDC		■	
REFACTORING				
Rename refactoring	dD#C		■	■

* Full Features Matrix available at www.borland.com

SYSTEM REQUIREMENTS

BORLAND® C++BUILDER® 2006

- Intel® Pentium® III/M 1.4 GHz, or Pentium IV 1.4 GHz minimum (Intel Pentium III/M 1.4 GHz+, or Pentium IV 2GHz+ recommended)
- Microsoft® Windows Server™ 2003 (SP1), Microsoft® Windows, XP Professional (SP2), Windows® 2000 Professional (SP4), Windows® 2000 Server (SP4)
- 512 MB RAM (1 GB+ recommended)

- 1 GB free hard disk space for C++Builder personality*
- 750 MB free hard disk space for prerequisites (including Microsoft® .NET Framework and SDK)
- CD-ROM or DVD-ROM drive
- SVGA or higher-resolution monitor (XGA recommended)
- Mouse or other pointing device

DEPLOYMENT (MINIMUM)

- Intel Pentium II/300 MHz or better
- Microsoft® Windows Server™ 2003 (SP1), Microsoft® Windows, XP Professional (SP2), Windows® 2000 Professional (SP4), Windows® 2000 Server (SP4)
- 128 MB RAM or better
- SVGA or higher-resolution monitor (XGA recommended)

* Does not include space required for optional 3rd party products.

ABOUT BORLAND

Borland Software Corporation is the global leader in platform independent solutions for Software Delivery Optimization. The company provides the software and services that align the people, process, and technology required to maximize the business value of software.



www.borland.com

Copyright © 2005 Borland Software Corporation. All rights reserved. All Borland brand and product names are service marks, trademarks or registered trademarks of Borland Software Corporation in the United States and other countries. Microsoft, Windows, and other Microsoft product names are trademarks or registered trademarks of Microsoft Corporation in the U.S. and other countries. All other marks are the property of their respective owners. 24023