

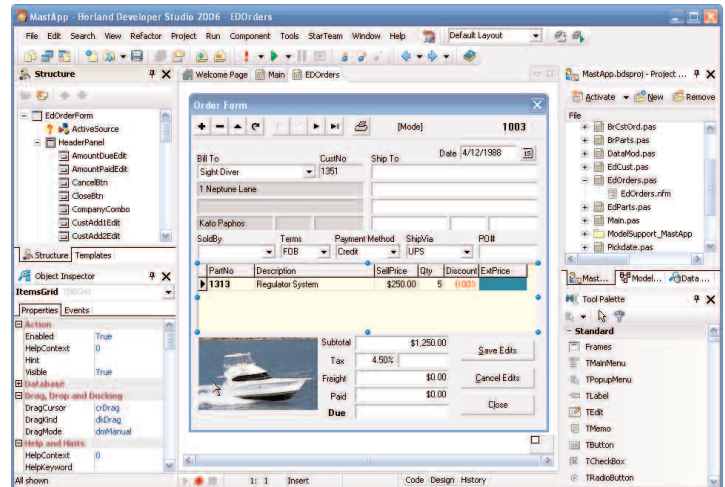
Borland®

Borland® C#Builder® 2006

The Ultimate IDE for Microsoft® Windows® Application Delivery

BRING ENTERPRISE DEVELOPMENT CAPABILITIES TO
MICROSOFT® .NET ENVIRONMENTS

The best-kept secret of enterprise .NET developers, Borland® C#Builder® 2006 brings true enterprise development capabilities like object-relational mapping, transparent object persistence, transactions, UML® modeling, and application lifecycle management to .NET environments. Leverage reverse-engineering to ease maintainability and two-way LiveSource® to keep code and models in sync. Reduce the time and cost of enterprise .NET development with integrated audits and metrics, requirements management, and source code management tools. Simplify database development with drag-and-drop support, schema management, and data migration. C#Builder 2006 is part of Borland Developer Studio - Borland's multi-language developer environment for Microsoft® Windows® and .NET applications. It is the only IDE that includes support for C#, C, C++ and Delphi (both Windows and .NET) applications within a single environment.



Borland C#Builder 2006 enhances this award-winning RAD environment with new auto-alignment to configurable guidelines, live code templates system, smart block completion, ECO state machines, and more.

FEATURES AND BENEFITS

SPEED DEVELOPMENT AND EASE MAINTAINABILITY WITH A TRUE .NET ENTERPRISE FRAMEWORK

Move to the next level of design-driven development with the ECO™ III model-powered framework for Microsoft .NET when building Web Services, ASP.NET, and Windows Form-based applications. Use the model-powered Borland® Enterprise Core Objects (ECO™) Object/Relational Mapping technology to generate or map to major enterprise-class relational databases, then later evolve the database based on changes in the design model. Build enterprise-scale applications using multiple synchronized ECO Space object caches for increased scalability and performance. New in ECO III, you can now also design robust enterprise applications at the state-machine level, allowing you to focus on application design instead of infrastructure.

EVERYTHING YOU NEED, ALL IN ONE IDE

With C/C++, C#, and Delphi languages, and support for the Microsoft .NET Framework, ASP.NET, VCL.NET, VCL, and Win32® SDKs, you have the right tools for any job. With full support for Win32 and .NET, C#Builder 2006 lets you develop and maintain native Win32 applications while simplifying the path to the Microsoft .NET Framework and next-generation Windows applications.

ACCELERATE DEVELOPMENT WITH THE MOST PRODUCTIVE AND RESPONSIVE RAD ENVIRONMENT EVER

A new live templates system guides developers through code structures, allowing users to tab through fields and insert points of structured code templates. Smart block completion anticipates and gracefully adds block closures as you type. Advanced C/C++ refactorings let you rapidly make extensive automated source code changes that work. Improve the performance of database-backed applications with new BDP ADO.NET connection pooling and SQL tracing. Take advantage of popular IDE Features like SyncEdit, History Manager, Palette searching, Help insights, Integrated Quality Central, Gallery Palette, and more.

STREAMLINE THE COMPLETE APPLICATION LIFECYCLE

Take full control of the application development lifecycle process with integrated requirements management, UML modeling, version control, bug tracking, and team collaboration tools. Ease maintainability with Together reverse engineering capabilities and leverage rapid prototyping with ECO III to improve the quality of requirements.

Borland® C#Builder® 2006

| KEY FEATURE HIGHLIGHTS* | d = Delphi (Win32) support | | # = C# support | | |
|---|----------------------------|---|----------------|-----|-----|
| | D = Delphi (.NET) support | | ARC | ENT | PRO |
| IDE | | | | | |
| New Live Templates System - tab through fields and insert points of any template | dD#C | ■ | ■ | ■ | ■ |
| New “Smart” Block completion - anticipates and gracefully adds block closures as you type | dD#C | ■ | ■ | ■ | ■ |
| DATABASE ACCESS FOR WINFORMS AND ASP.NET | | | | | |
| New BDO ADO.NET Connection Pooling and SQL Tracing | D# | ■ | ■ | ■ | ■ |
| Updated BDP for ADO.NET client/server and multi-tier drivers for Borland® InterBase® 7.5, Oracle® 10g IBM® DB2® v8.x, Microsoft® SQL Server™ 2000/2005, New MySQL® v4.0.24, and Sybase® v12.5 | D# | ■ | ■ | ■ | ■ |
| Updated BDP for ADO.NET local access servers for Borland InterBase 7.5, New MySQL v4.0.24, MSDE 2000/2005®, and Microsoft® Access | D# | ■ | ■ | ■ | ■ |
| BORLAND ECO III RAPID DEVELOPMENT | | | | | |
| New! ECO State Machine powered by State Chart visual diagrams | D# | ■ | | | |
| New! Multiple database support, simultaneous persistence to multiple and mixed database servers | D# | ■ | | | |
| New! ASP.NET Autoform Support | D# | ■ | ■ | | |
| New! Select ECO base features in Pro and Enterprise editions | D# | ■ | ■ | | ■ |
| TEAM PRODUCTIVITY AND SOURCE CODE MANAGEMENT | | | | | |
| Complete native Borland® StarTeam® and Borland® CaliberRM™ IDE Integration | dD#C | ■ | ■ | ■ | ■ |
| ASP.NET | | | | | |
| New HTML/ASP.NET source preservation | D# | ■ | ■ | ■ | ■ |
| Enhanced HTML/ASP.NET Tag Editor | D# | ■ | ■ | ■ | ■ |
| New ASHX HTTP Handler Wizard | D# | ■ | ■ | ■ | ■ |
| BORLAND® TOGETHER® MODELING | | | | | |
| Full two-way LiveSource class diagrams | dD# | ■ | ■ | ■ | ■ |
| Class, Sequence, Collaboration, State Chart, Deployment, Use Case, Activity, Component, and Design Diagrams | dD# | ■ | ■ | ■ | ■ |
| Integrated audits and metrics, Design Patterns, and Document Generation | dD# | ■ | ■ | | |
| REFACTORING | | | | | |
| Rename refactoring | dD#C | ■ | ■ | ■ | ■ |
| Introduce Variable, Introduce Field, Inline Variable, Extract Method, Change Parameters, Safe Delete, Push Members Up/Down, Pull Members Up, Extract Superclass, Extract Interface, and Move Members refactorings | dD# | ■ | ■ | ■ | ■ |

* Full Features Matrix available at www.borland.com

| SYSTEM REQUIREMENTS | | |
|--|---|---|
| BORLAND® C#BUILDER® 2006 <ul style="list-style-type: none"> ■ Intel® Pentium® III/M 1.4 GHz, or Pentium IV 1.4 GHz minimum (Intel Pentium III/M 1.4 GHz+, or Pentium IV 2GHz+ recommended) ■ Microsoft® Windows Server™ 2003 (SP1), Microsoft® Windows, XP Professional (SP2), Windows® 2000 Professional (SP4), Windows® 2000 Server (SP4) ■ 512 MB RAM (1 GB+ recommended) | <ul style="list-style-type: none"> ■ 400 MB free hard disk space for C#Builder personality* ■ 750 MB free hard disk space for prerequisites (including Microsoft® .NET Framework and SDK) ■ CD-ROM or DVD-ROM drive ■ SVGA or higher-resolution monitor (XGA recommended) ■ Mouse or other pointing device | DEPLOYMENT (MINIMUM) <ul style="list-style-type: none"> ■ Intel Pentium II/300 MHz or better ■ Microsoft® Windows Server™ 2003 (SP1), Microsoft® Windows, XP Professional (SP2), Windows® 2000 Professional (SP4), Windows® 2000 Server (SP4) ■ 128 MB RAM or better ■ SVGA or higher-resolution monitor (XGA recommended) <p>* Does not include space required for optional 3rd party products.</p> |

ABOUT BORLAND

Borland Software Corporation is the global leader in platform independent solutions for Software Delivery Optimization™. The company provides the software and services that align the people, process, and technology required to maximize the business value of software.



www.borland.com

Copyright © 2005 Borland Software Corporation. All rights reserved. All Borland brand and product names are service marks, trademarks or registered trademarks of Borland Software Corporation in the United States and other countries. Microsoft, Windows, and other Microsoft product names are trademarks or registered trademarks of Microsoft Corporation in the U.S. and other countries. All other marks are the property of their respective owners. 23886.1